

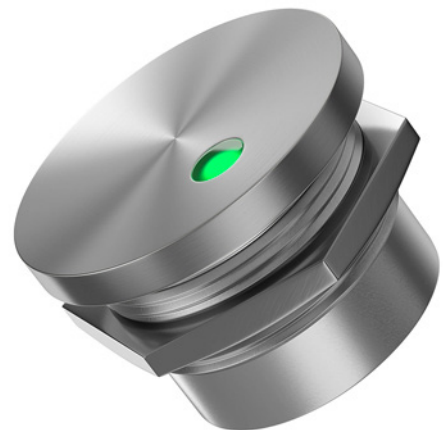
SML1

22.5 mm, flat

SML1 is a touch metal piezo switch with an illuminated dot. The product is suitable for use in the harshest conditions, thanks to its waterproof and shock-resistant housing and absence of mechanical moving elements. This hyper-ruggedized IP68 K / IP69 K switch can serve in Aviation, Defence, Marine & Luxury Yachts and other spheres. SML1 is also a fully customizable product.

Key Characteristics:

- 12 V or 24V LEDs standard (3.3 V and 5 V available)
- Red, green, amber, blue, white or bi-color red/green LEDs
- Aviation Grade Aluminum or Stainless Steel 303 standard (304, 316 optional)
- Anodized Aluminum in silver, black, red, green, blue or gold finishes
- 30 cm cable standard (longer length, connectors, pins or terminal block optional)
- 0.2 A, 24 V standard (1 A, 24 V available)



Electrical Data

Switch Function	N.O. Momentary (N.C. optional) Prolonged, Haptic, Toggle (On/Off), Continuous as well as Programmable, Timer, Slide, Self Diagnostic, and WiFi Enabled optional
Switch Voltage	0-24 AC/DC
Switch Current	0.2 A standard (up to 1 Amp optional)
Rated Breaking Capacity	Power Dissipation < 5 Watt
Operating Cycles	> 50,000,000
Switch Resistance OFF	> 20M Ohm
Switch Resistance ON	< 5 Ohm
Switch Capacitance	10 pF
Switch On Duration	Up to 20 sec
Contact Configuration	Free Polarity

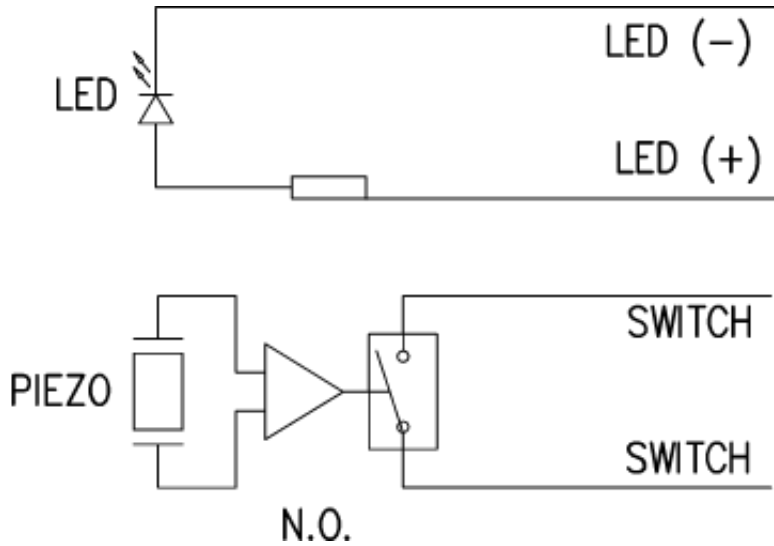
Mechanical Data

Housing Materials	Aluminum 6061 T651, Stainless Steel (Type 303, 304 or 316) or Plastic
Actuating Force	2-5 Newtons
Non-Illuminated	Polycarbonate
Connection	22 AWG standard, (pin, tab or terminal blocks optional)
Shock Protection	IK 10
Fastening Torque	2.5 Nm

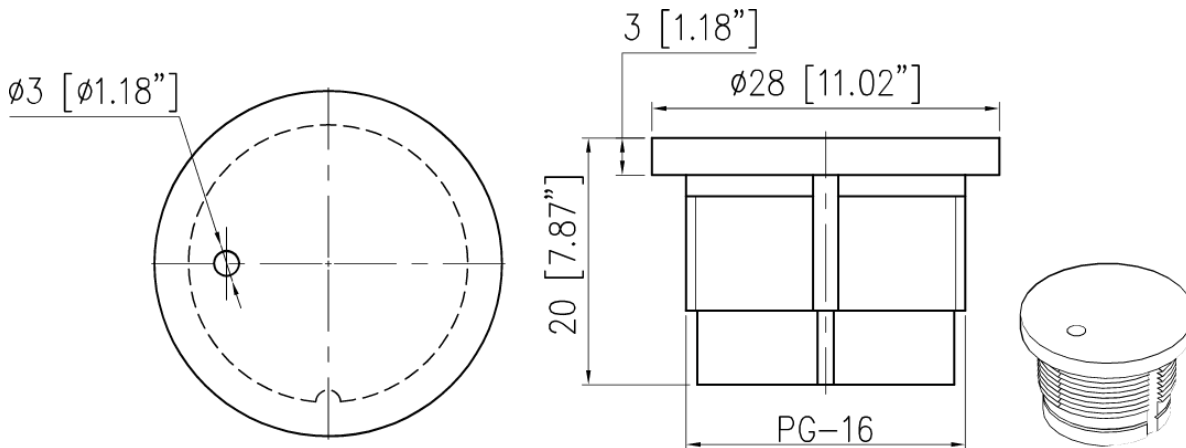
Environmental Data

Operating Temperature	-20°C to +75°C
Storage Temperature	-40°C to +125°C
IP Protection	IP69 K

Electrical Diagram



Technical Drawing



*The specifications, descriptions and illustrations indicated in this document are based on current information. All content is subject to modifications and amendments. Users should evaluate the suitability and test each product selected for their own applications.